
PASSION. EXPERIENCE. DILIGENCE.



**FREE SHIPPING
FOR
PINNACLE
CUSTOMERS**

(248) 840-3100

OFFICE HOURS:

MON - FRI

8 AM - 7 PM

With respect to new or expanding x-ray projects, our services includes assistance with radiation regulatory matters, selection and installation of equipment, applications training, and various ongoing support services. Most of our podiatric customers depend on us for turnkey projects. If a podiatric office only needs some of our skills, we tailor our services to meet those specific requirements.



MODEL 128i SPECS

\$13,995 Price includes:

- On-Site installation
- Travel & Training

Shipping cost: \$595

shipping cost is waived for pinnacle customers

Includes software support and software upgrades for the life of the system.

IMAGER SPECIFICATIONS

- No cassettes to handle, repair or replace
- Image Access time: 12-13 seconds from time of acquisition
- Sensor type: Single CCD Mounted behind a scientific mirror to protect against effects of
- X-ray exposure over time- less chance of system failure
- Field of View: 7"X11"
- Imager is designed to tilt and slide, never losing contact with the Orthoposer- prevents damage from drops)
- Power Type: Standard wall outlet
- Produces 24 Megapixel images
- Computer, monitor, keyboard, all included
- Keyboard and mouse included



ORTHOPOSER SPECIFICATIONS

- 33" in width by 29" in depth by 9" in height
- 54" in width by 41" in depth with 4" step installed and head laid down for a lateral image
- 4" step to help patient mount the system (helps qualify for the ADA Tax Credit)
- FDA Approved materials
- Allows for retrofitting of virtually any existing x-ray generator (ask if yours can be retrofitted- save thousands over having to purchase a new x-ray generator)



Use our QR code to find out more information about the
128i Model on our website or call
(248)840-3100



MODEL 128S SPECS

\$18,895 Price includes:

- On-Site installation
- Travel & Training

Shipping cost: \$595

shipping cost is waived for pinnacle customers

Includes software support and software upgrades for the life of the system.

IMAGER SPECIFICATIONS

- No cassettes to handle, repair or replace
- Image access time: 12-13 seconds from time of acquisition
- Sensor type: Single CCD mounted behind a scientific mirror to protect against effects of x-ray exposure over time- less chance of system failure
- Field of View: 8"X12"
- Imager is designed to tilt and slide, never losing contact with the Orthoposer- prevents damage from drops
- Power Type: Standard wall outlet
- Produces 26.2 Megapixel images (upgraded optical lens for improved picture quality)
- Imager is delivered with a Dell Small Form Factor Computer - Intel i5 Processor, 8 GB RAM and a 1 TB Hard drive (Approximately 40,000 image capacity)



ORTHOPOSER SPECIFICATIONS

- 36" in width by 29" in depth by 6.25" in height
- 57" in width by 44" in depth with X-cel and 3" step installed
- 3" step to help patient mount the system (helps qualify for the ADA Tax Credit)
- FDA Approved materials
- Allows for retrofitting of virtually any existing x-ray generator (ask if yours can be retrofitted- save thousands over having to purchase a new x-ray generator)



Use our QR code to find out more information about the
128S Model on our website or call
(248)840-3100



RAYENCE XMARU WCC1012 SPECS

\$18,995 Price includes:

- On-Site installation
- Travel & Training

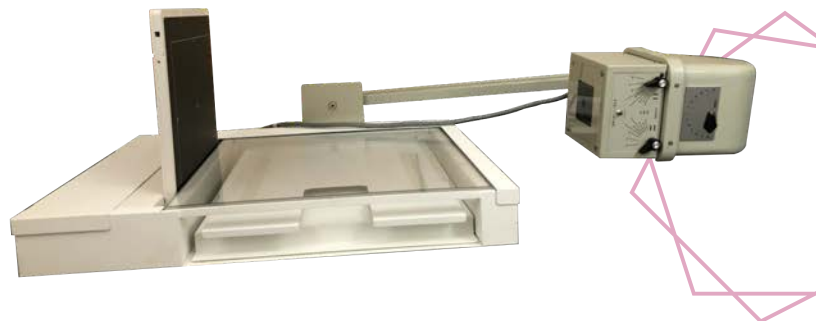
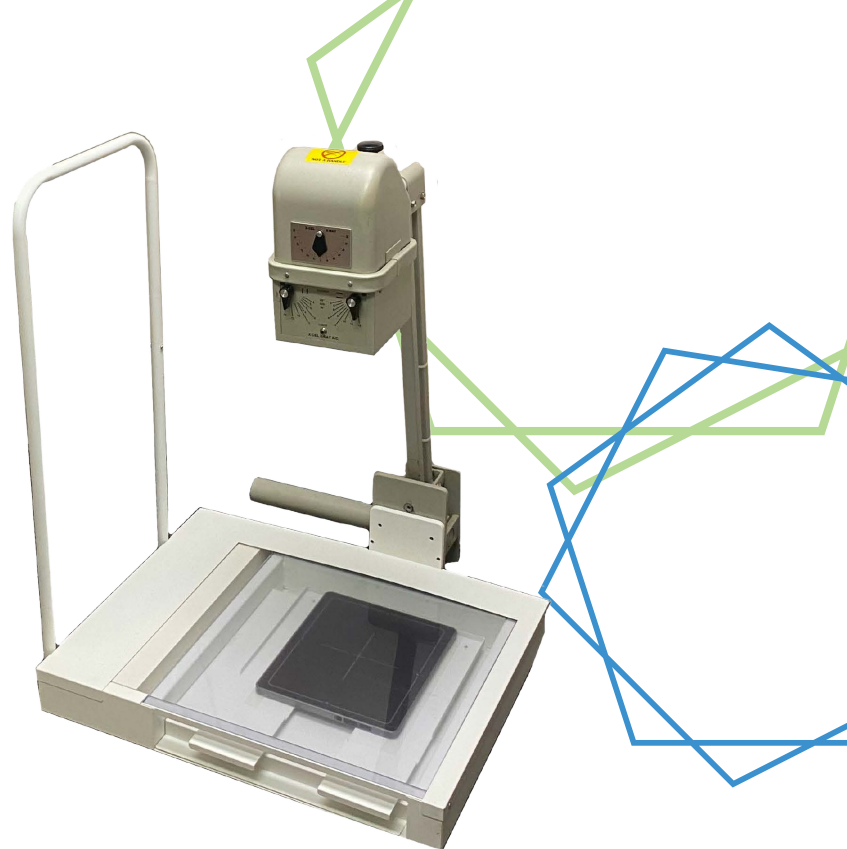
Shipping cost: \$595

shipping cost is waived for pinnacle customers

Price includes five years of software and technical support.

1012 IMAGER SPECIFICATIONS

- Rayence XMARU Flat Panel
- Image access time: 4-5 seconds from time of acquisition
- Sensor type: Cesium 127 Pixel Pitch, 3.9 line pairs per millimeter
- Field of View: 10" x 12"
- Detachable handle
- Power Type: Standard wall outlet



1012 ORTHOPOSER SPECIFICATIONS

- 37" in width by 33" in depth by 3.5" in height
- 52" in width when in the lateral position
- FDA approved materials
- Allows for retrofitting of virtually any Existing x-ray generator (ask if yours can be)
- retrofitted- save thousands over having to purchase a new x-ray generator)



Use our QR code to find out more information about the Rayence wireless flat panel Model on our website or call (248)840-3100



X Cel Generator

New

X Cel Generator

Reconditioned

\$4,995 Price includes:

- Headtube
- Control box
- Arm bracket
- 1 year warranty parts and labor

\$10,495 Price includes:

- Headtube
- Control box
- Arm bracket
- 5 year manufacturer warranty parts and labor



shipping cost is waived for pinnacle customers



Use our QR code to find out more information about the Rayence wireless flat panel Model on our website or call (248)840-3100